

CORPORATE HISTORY

FORMATION

In 1965, Professional Engineering Consultants, P.A. was created by the merger of three engineering design firms. These three firms combined their capabilities to establish one Professional Association:

- ▶ Hysom and Peugh – Mechanical Consulting Firm
- ▶ Hartwell and Baxter – Structural Engineering Firm
- ▶ Howard Bridges – Electrical Engineering Firm

By 1970, PEC offered Mechanical, Electrical and Structural Facilities Engineering Services and the Civil Engineering Services of Transportation, Environmental and Land Development.

ALLIED LABORATORIES

In 1973, the Allied Laboratories Department was formed offering Materials Testing and Inspection services. Survey, which PEC already offered, was reorganized into the Allied Laboratories Department. The next year, Geotechnical Services were added. And in 1975, operations expanded to include Air and Water Balance capabilities. This service was created to ensure the client received a finished HVAC system which was adjusted for maximum comfort and design efficiency.

The Lab accomplished its first project with two full-time and two summertime employees. Today the Lab employs more than 45.

WICHITA LOCATIONS

- ▶ **1965** – PEC's office was located on the second floor of the Davidson Building at Laura and William Streets.
- ▶ **1968** – PEC purchased the 1440 East English building. This became PEC's home for the next 21 years. Allied Laboratories Department, was located in a house across the street from the English Street office.
- ▶ **1979** – Building at 349 South Ida was leased and Allied Laboratories' expanded operations were moved to that location. The old houses across the street from 1440 East English were razed and a parking lot was paved for the employees.
- ▶ **1982** – A second building was leased at 355 South Ellis. The Land Development Division moved to this office and later housed the Environmental Division when it outgrew its area.
- ▶ **1988** – PEC felt a commitment to the City of Wichita's efforts to enhance the downtown area and began searching for a property to move downtown. PEC purchased the former Price Auto Service and Dealership site at Topeka and English.
- ▶ **1989** – PEC employees moved into a newly renovated office building at 303 South Topeka to serve its growing client base and to consolidate its operations.
- ▶ **1991** – The Wichita Chamber of Commerce recognized PEC's commitment to Wichita with the Keeper of the Plains Award.
- ▶ **1994** – PEC rehabilitated the former Beal Office Supply at 350 South Washington. This facility now houses Allied Laboratories.
- ▶ **1996** – PEC's growth made it necessary to add a second floor to its 303 South Topeka office.
- ▶ **2003** – PEC expands the second floor of its 303 South Topeka office.
- ▶ **2004** – Purchased Moody Engineering, Inc. The Wichita Chamber of Commerce recognized PEC's commitment to Wichita with the Over The Years Award.



Ervin E. Hysom, P.E.



Robert B. Peugh, P.E.



Leslie K. Baxter Jr., P.E.



Carl O. Knop, P.E.

OFFICE LOCATIONS

In February of 1997, Professional Engineering Consultants, P.A., expanded to include a full service Civil Engineering Firm located in Topeka, with a third office in Lawrence; followed in 2001 with an office in Pittsburg; and expanding with a fifth office location in Tulsa, Oklahoma in 2003.

TECHNOLOGY

Technology has always impacted the engineering business. PEC was the first regional engineering firm to invest in computer aided design (CAD) almost 30 years ago. PEC continues to invest in technology to improve customer service and project delivery.

Building Information Modeling

Today, many of our clients require Building Information Modeling (BIM) to be used on their projects. Because of our work for both the federal government and private industry, PEC provides BIM in two different computer formats, depending on the needs of the client. This leadership has allowed us to be a resource for our architectural partners and project owners as they begin to understand the value of this system.

Sustainable Design

Every day, on every project PEC employs sustainable design practices. Since our founding in 1965 we have pushed the limits of available construction technology to provide our clients with common sense solutions to benefit both our planet and their bottom line. Sustainable design isn't a fad. It is a philosophy and PEC has always embraced this thinking. For our clients, this means common sense solutions distilled from the broad spectrum of sustainability.

Computational Fluid Dynamics for Airflow Modeling

Computational Fluid Dynamics (CFD) analysis has been long used by manufacturers. This powerful software has allowed the virtual prototyping of fluid flow heat transfer in aerospace, automotive, electronics and many other industries. PEC has invested in this technology to apply to the built environment. CFD allows our engineers to create a virtual model, showing patterns of airflow, heatflow and temperature distribution inside and outside buildings. This information allows us to optimize these patterns based on the owner's goals for comfort, service, budget and energy usage.

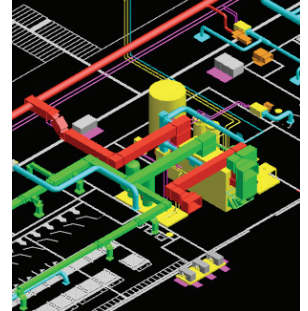
LOOKING FORWARD

Professional Engineering Consultants employed 26 people in 1965. Today PEC employs more than 270. Growth has not been dramatic but steady, with consistent reinvestment of capital into the firm to allow orderly expansion.

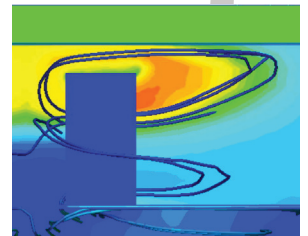
PEC continues to grow and is an exporter of talent. The firm has completed projects in 48 states and has been listed in the Engineering News Record as one of the nationwide top 500 design firms since 1989.

PEC supports its staff's active participation in professional associations and technical societies. Many members of the firm hold leadership positions in those organizations. PEC has an active policy encouraging employees to continually enhance their skills through higher education and support those endeavors financially.

With the leadership of its current Directors, PEC has become one of the largest multi-discipline engineering firms headquartered in Kansas, offering engineering services in Transportation, Airports, Water/Wastewater, Municipal Services, Land Development, Mechanical, Electrical, Structural and Telecommunications. PEC continues to offer Surveying, Geotechnical, Inspection & Testing, and Air & Water Balance through our Allied Laboratories Department.



Building Information Modeling



Computational Fluid Dynamics for Airflow Modeling



PEC Board of Directors